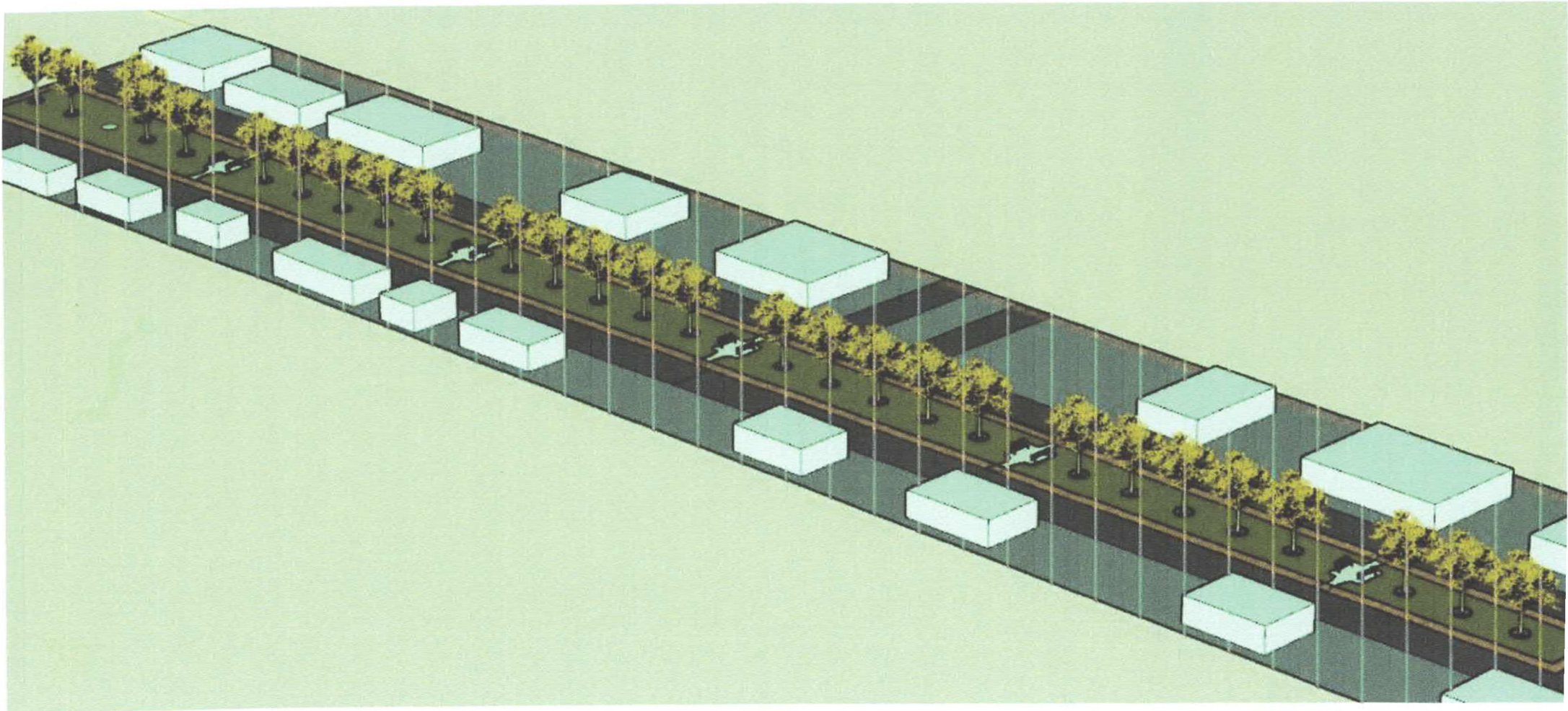
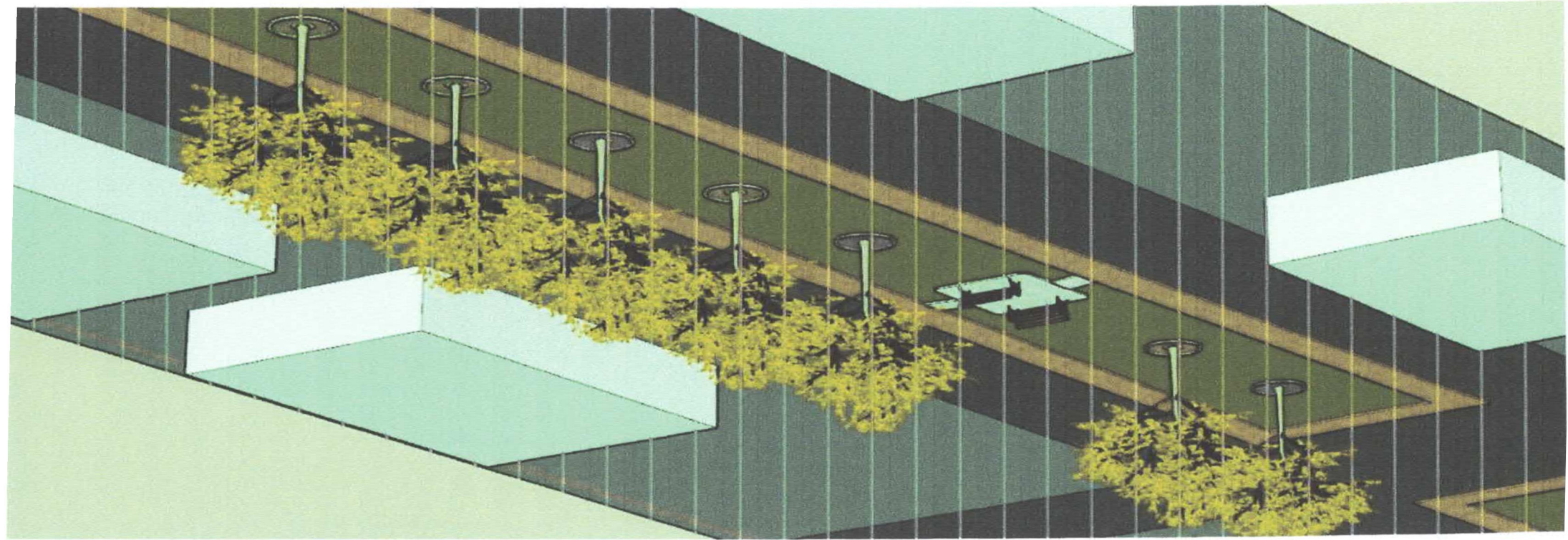
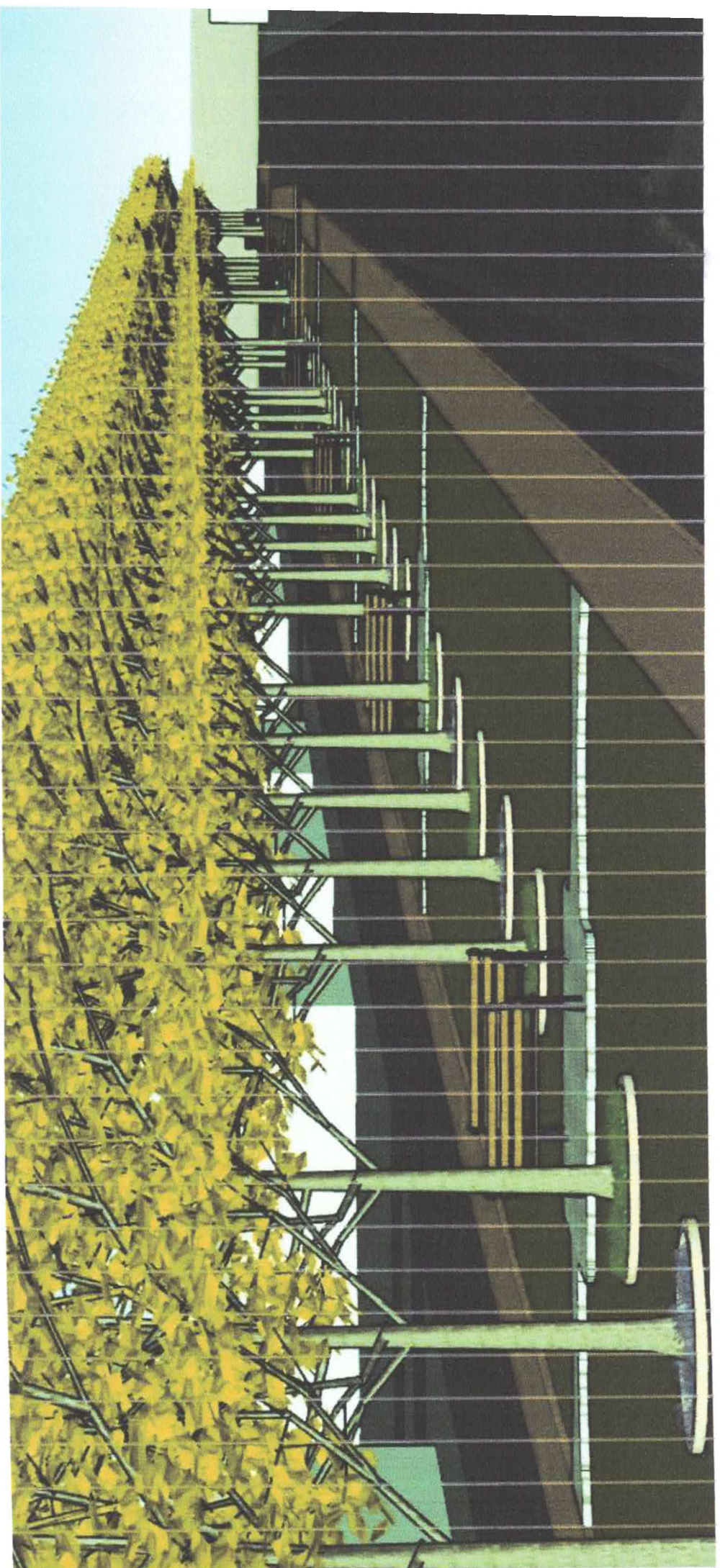


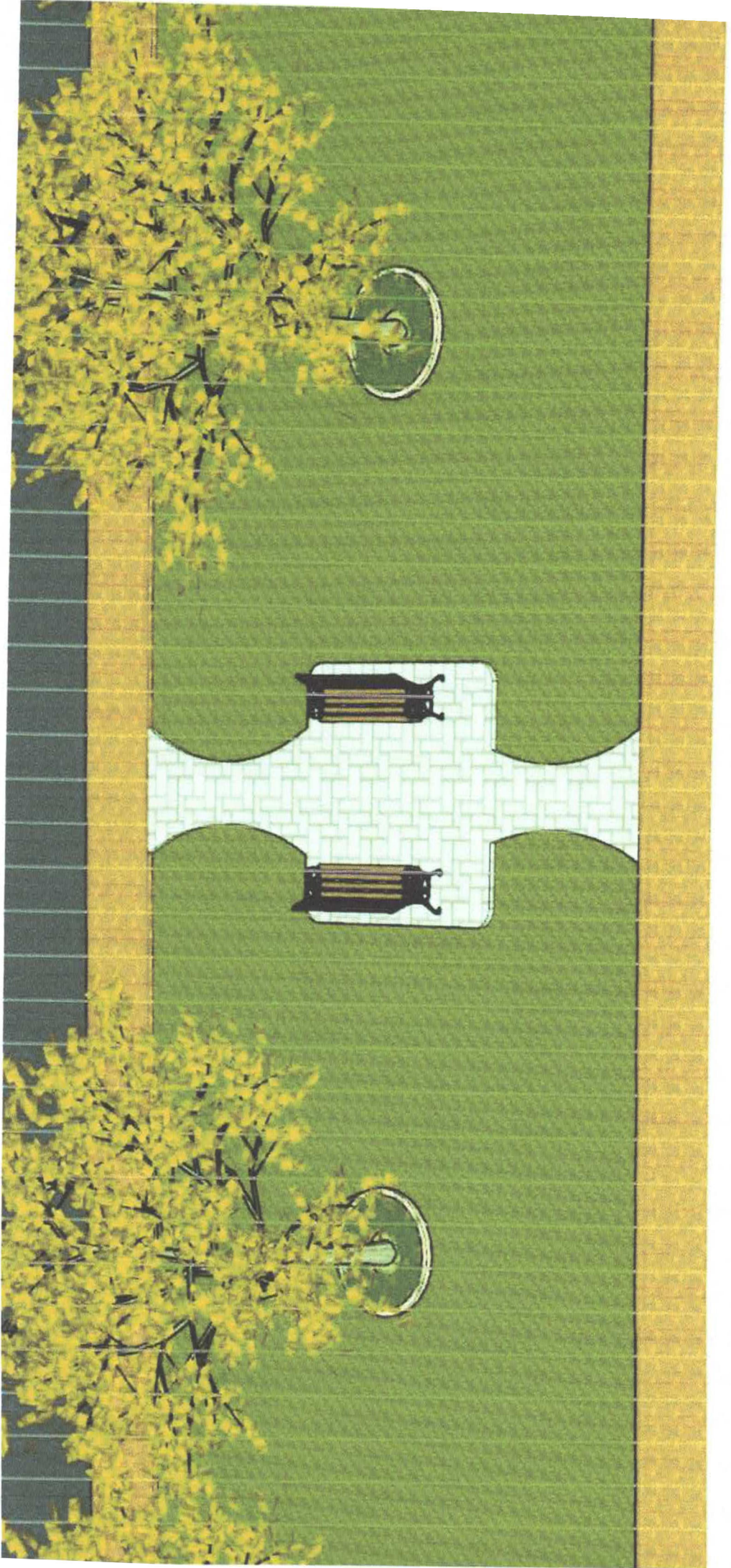
PROJETO
AVENIDA DOS IPÊS
SÃO VALÉRIO - TO

Detalhes



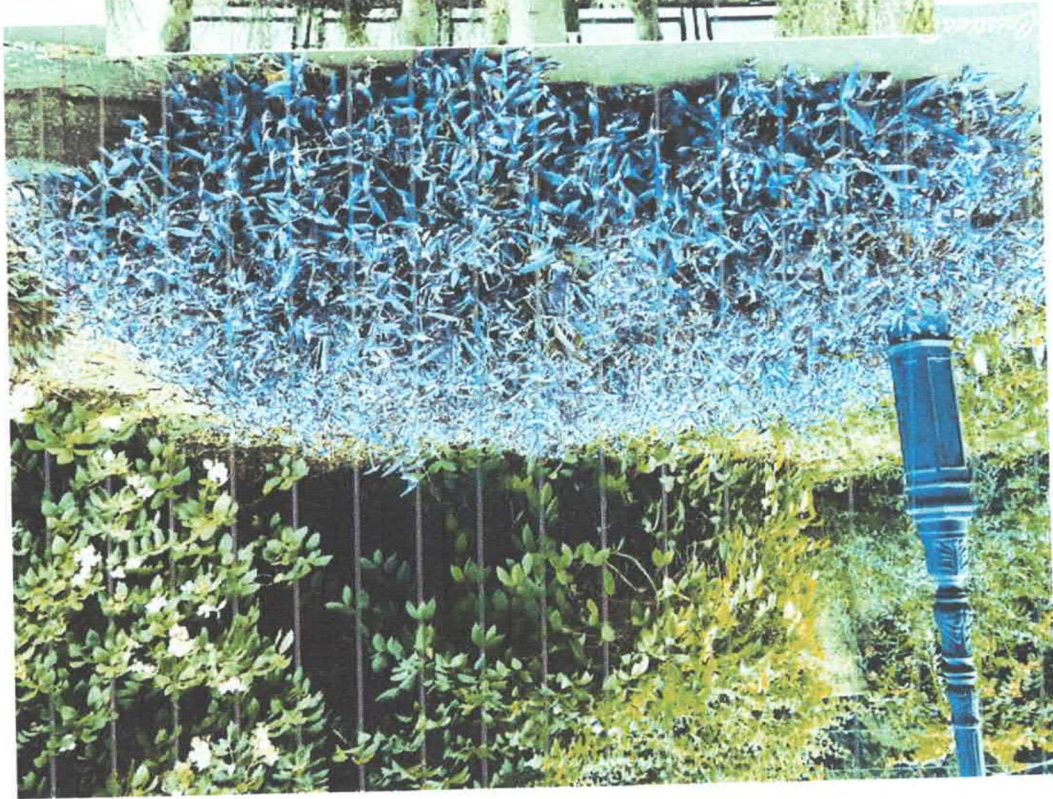


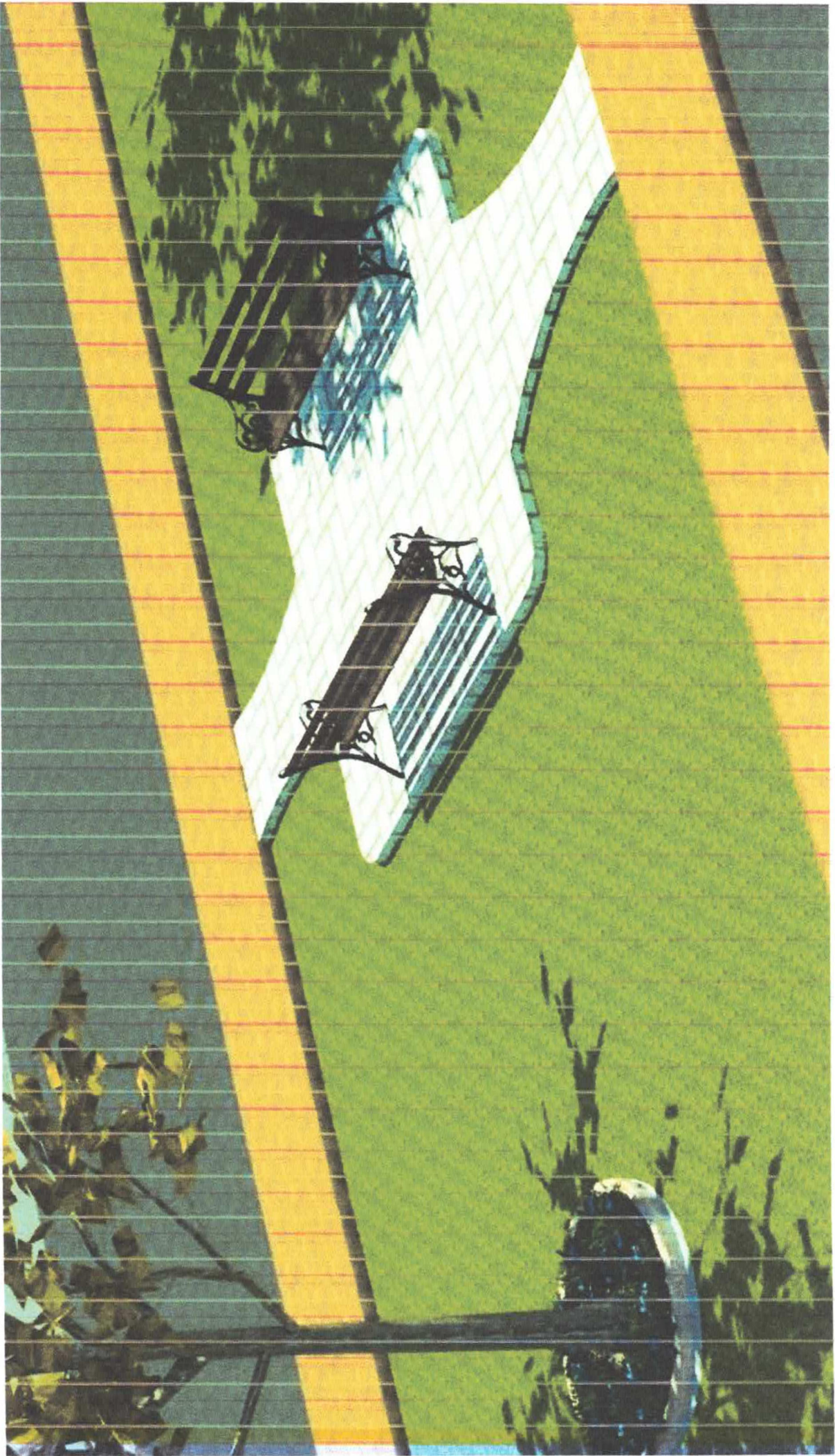




Quantidades de mudas

- Ipê amarelo: 39
- Gramma esmeralda: 2.600 m²
- Trapoeraba roxa: 570
- Vinca: 200





Elementos paisagísticos

- Quantidade de mini-praças: 7
- Quantidade de bancos: 14
- Área total de calçamento: 1.077 m²