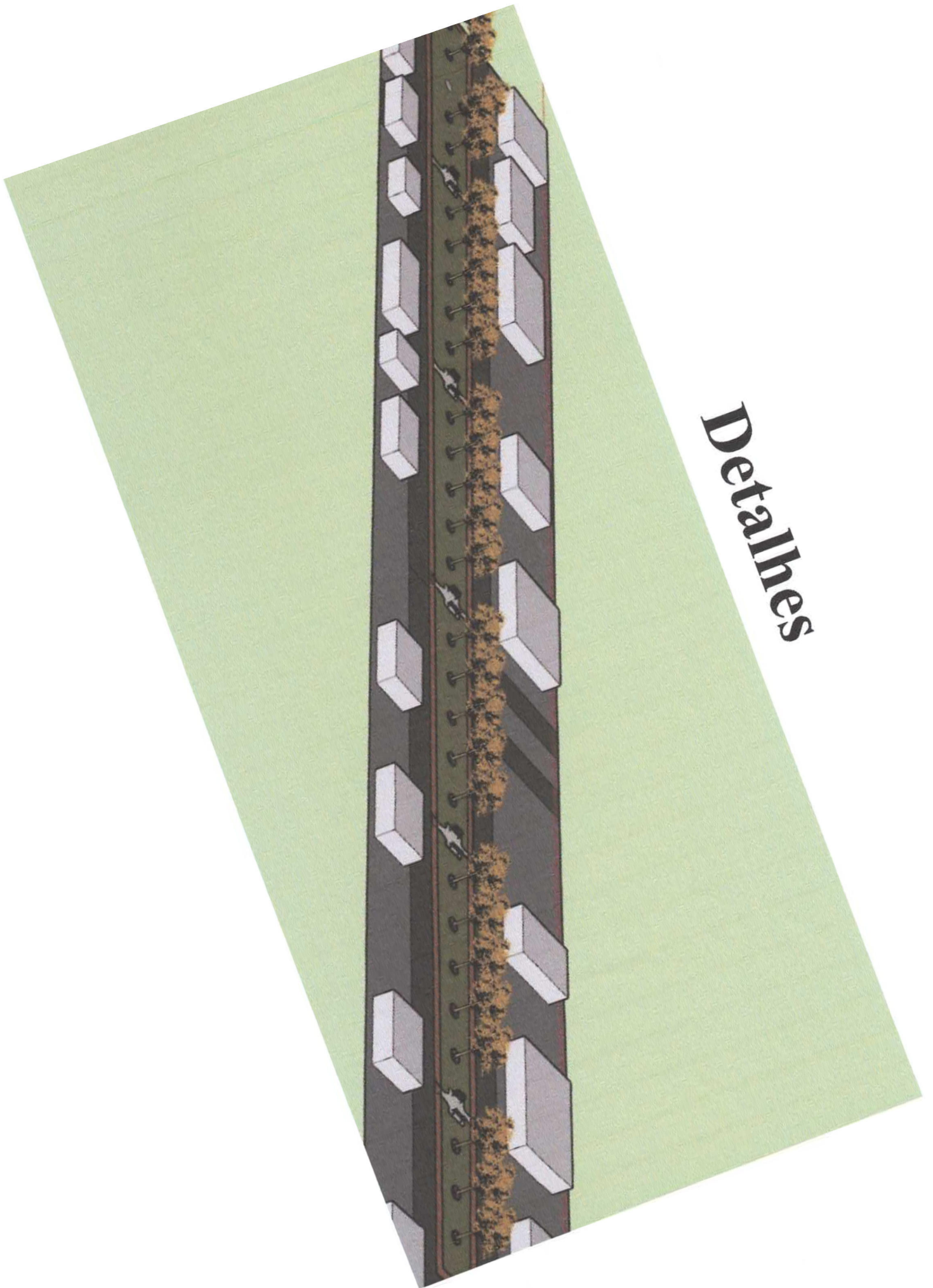
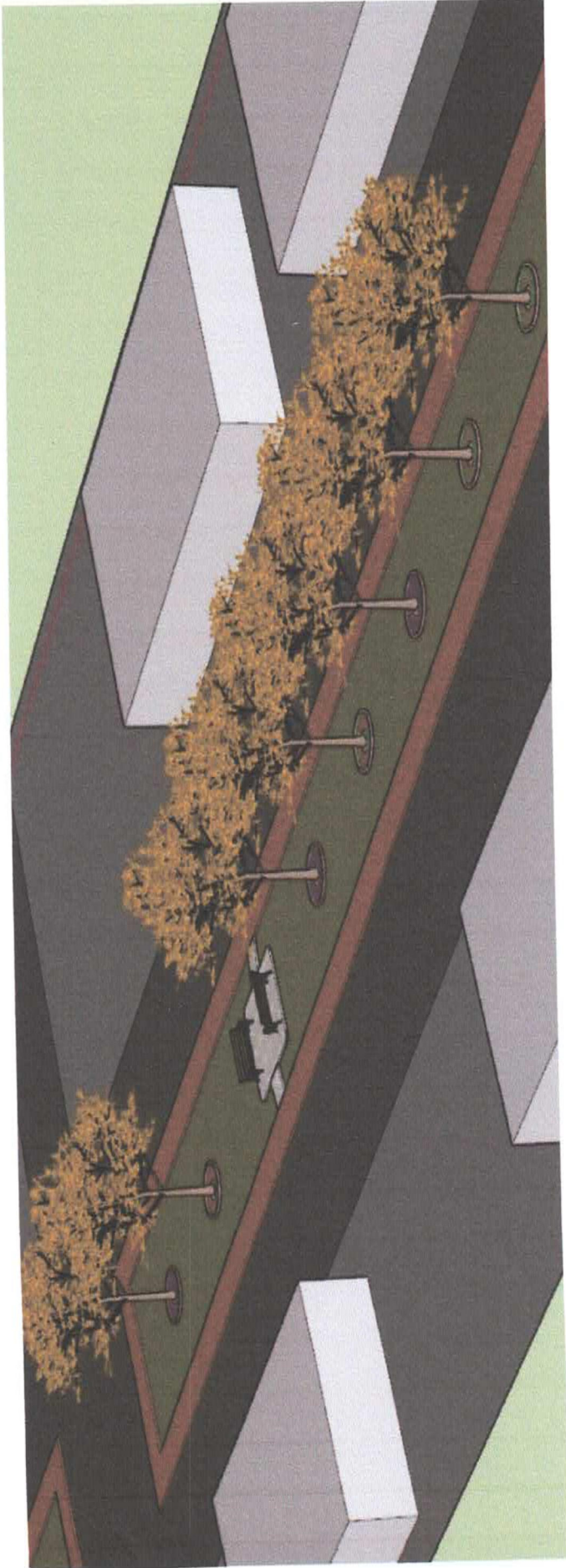


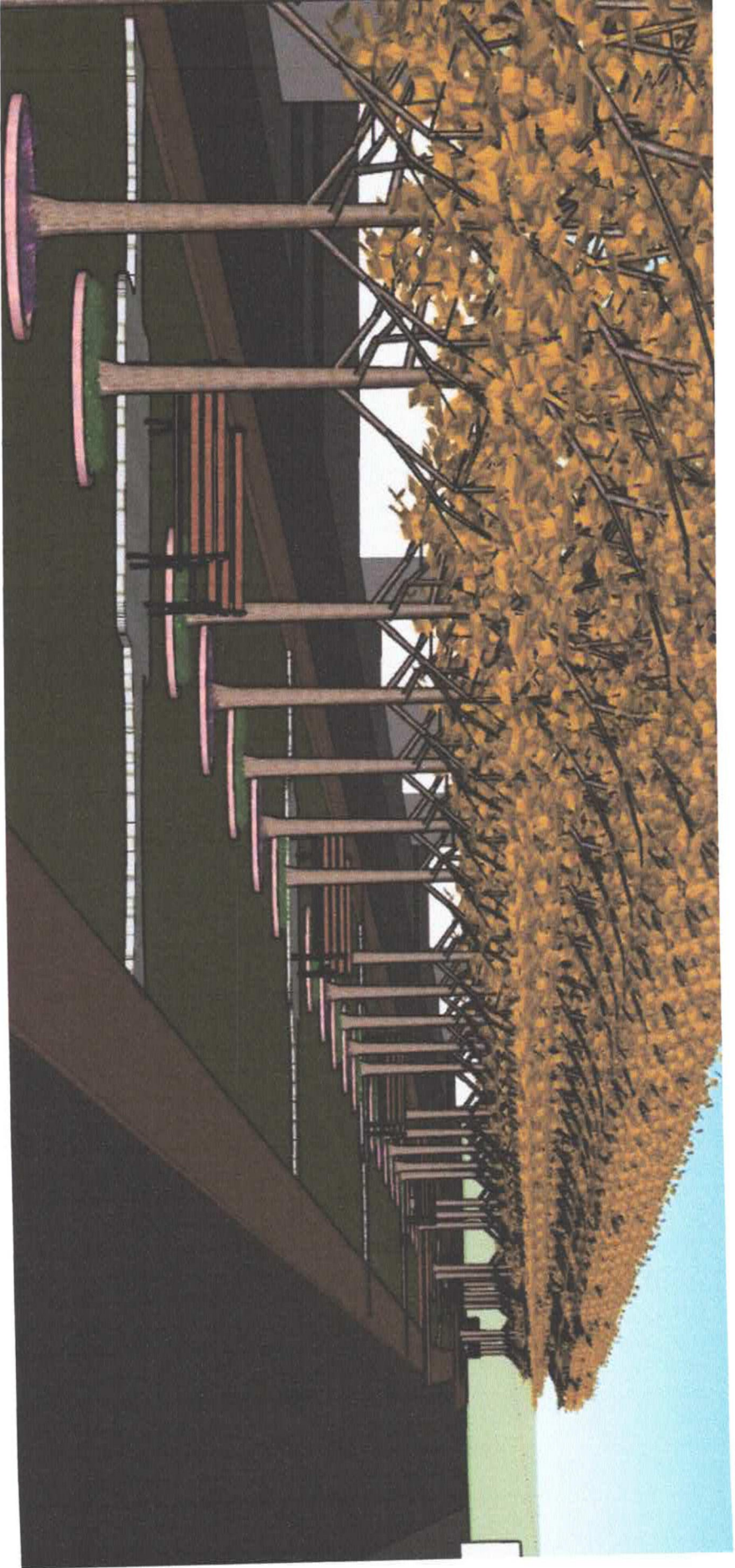
**PROJETO**  
**AVENIDA DOS IPÊS**  
**SÃO VALÉRIO - TO**

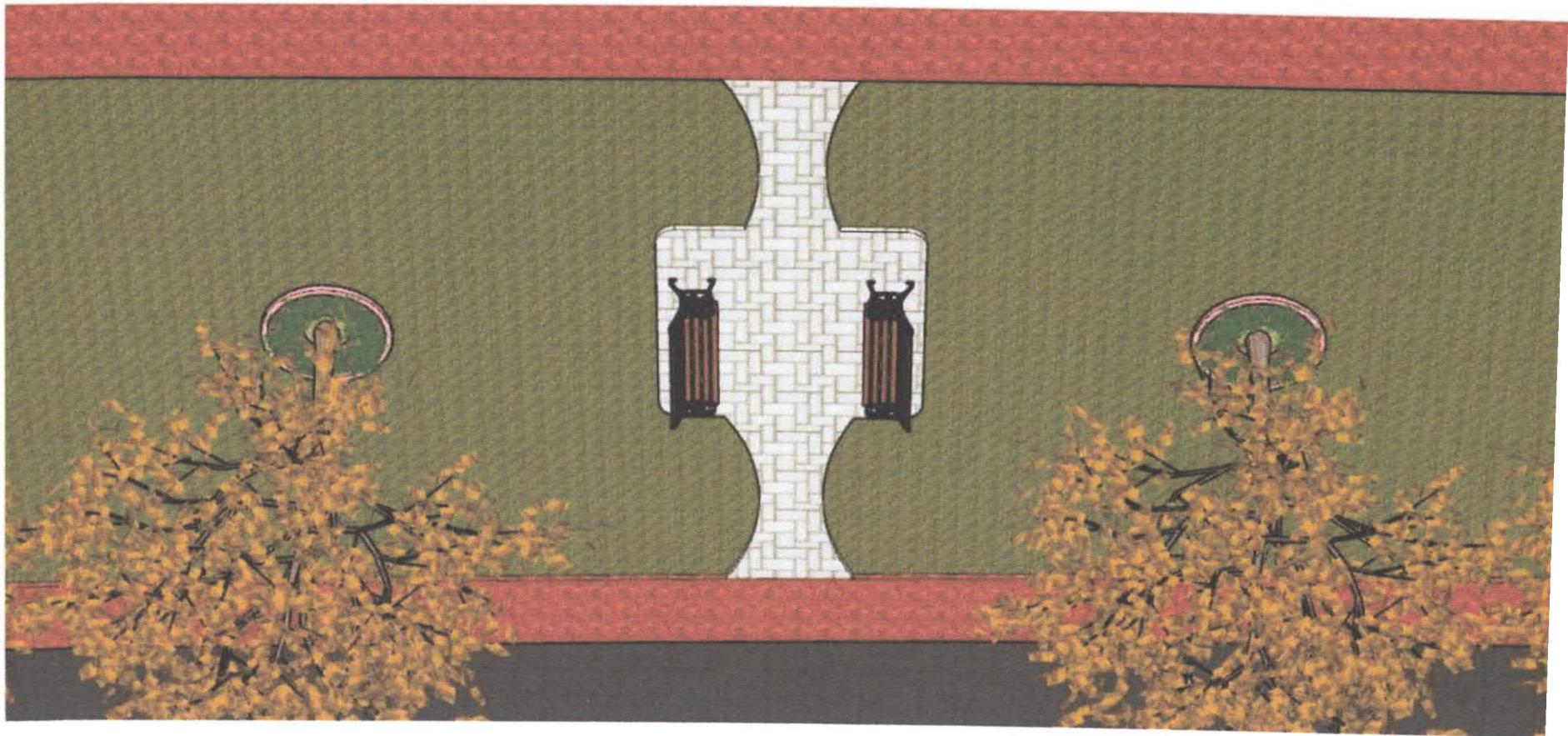


# *Detalhes*











# Quantidades de mudas

- Ipê amarelo: 39
- Gramma esmeralda: 2.600 m<sup>2</sup>
- Trapoeraba roxa: 570
- Vinca: 200



# Elementos paisagísticos

- Quantidade de mini-praças: 7
- Quantidade de bancos: 14
- Área total de calçamento: 1.077 m<sup>2</sup>



