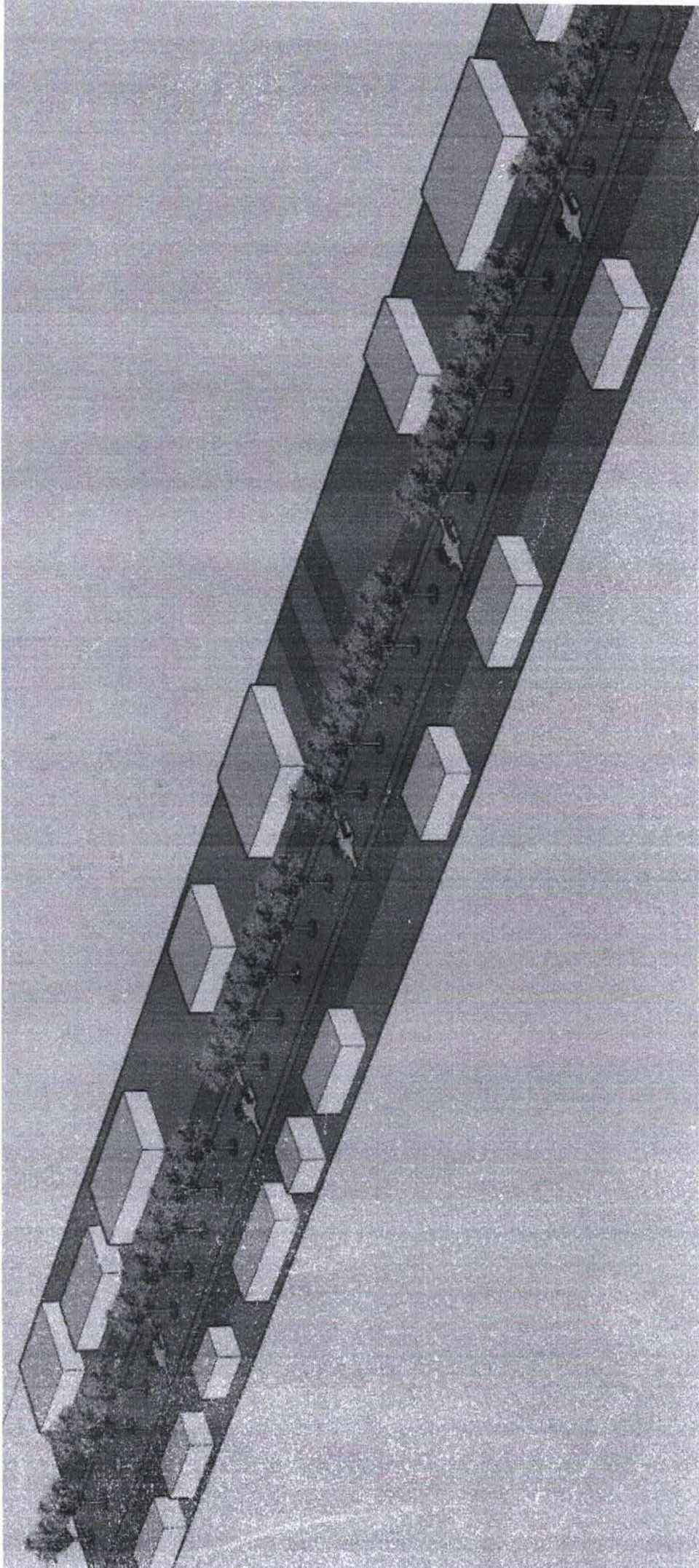


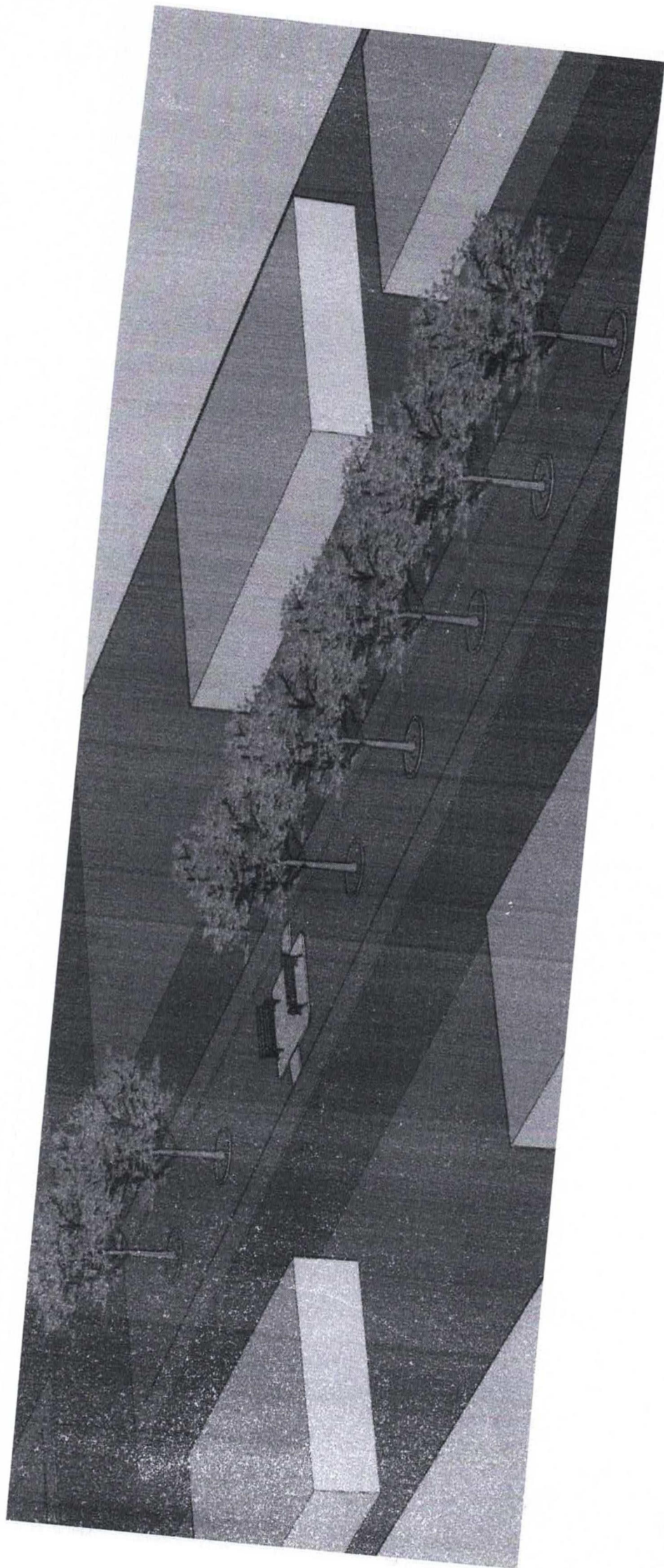
PROJETO
AVENIDA DOS IPÊS
SÃO VALÉRIO - TO

PM SÃO VALÉRIO-TO
FLS. N° 1110
ASS. 11/10/03

Detalhes

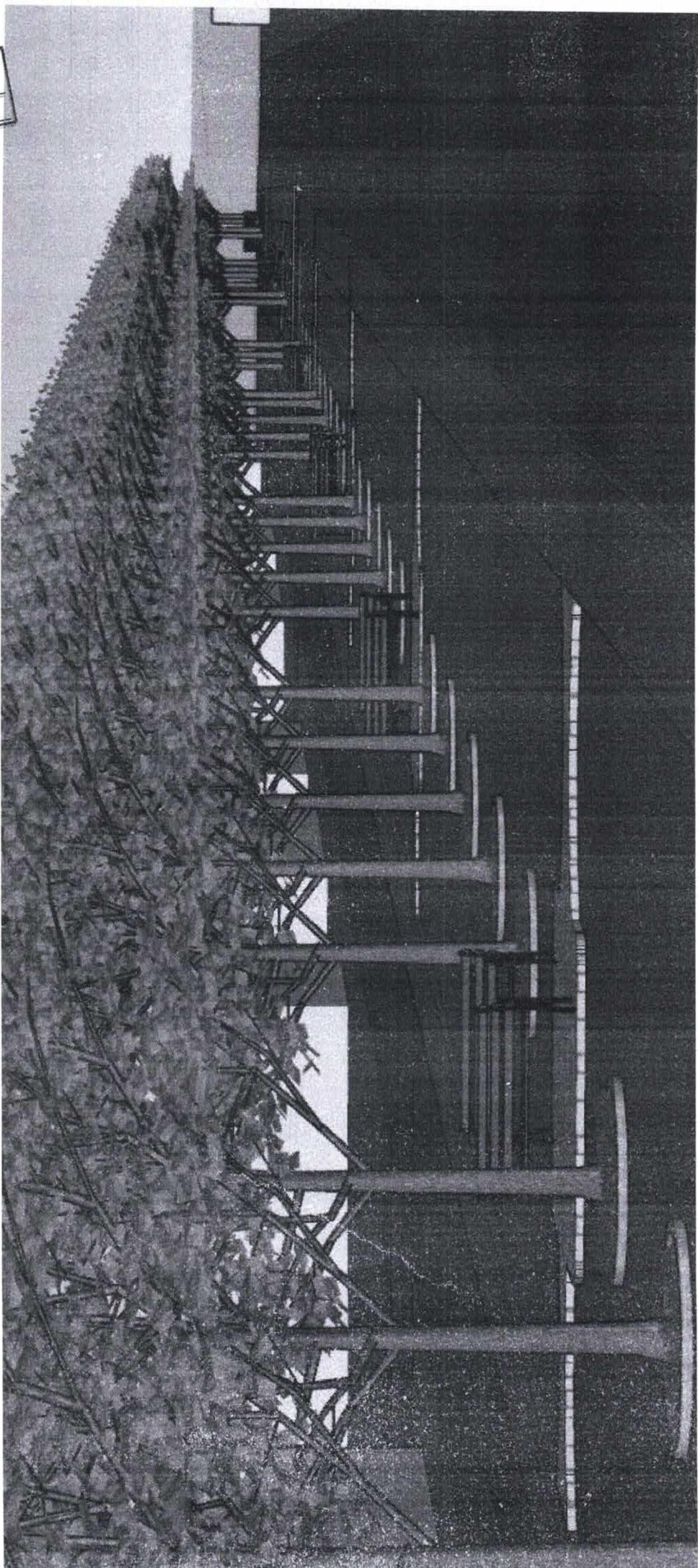


P.M SÃO VALÉRIO-TO
FLS. N° 23
ASS. P. L. L.

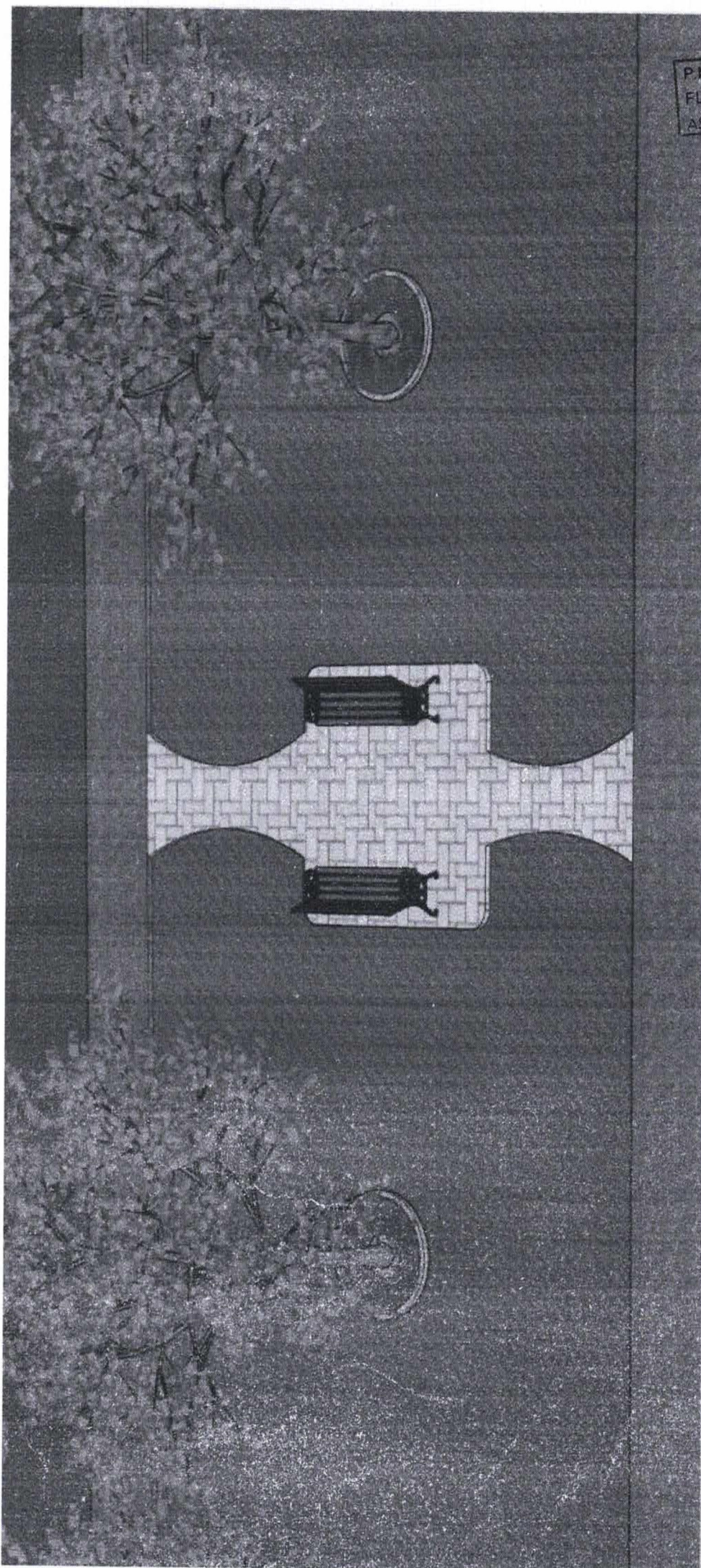


P.M SÃO VALÉRIO-TO
FLS. N° 14
ASS. *Deloz*

P.M SÃO VALÉR
FLS. N°
ASS.



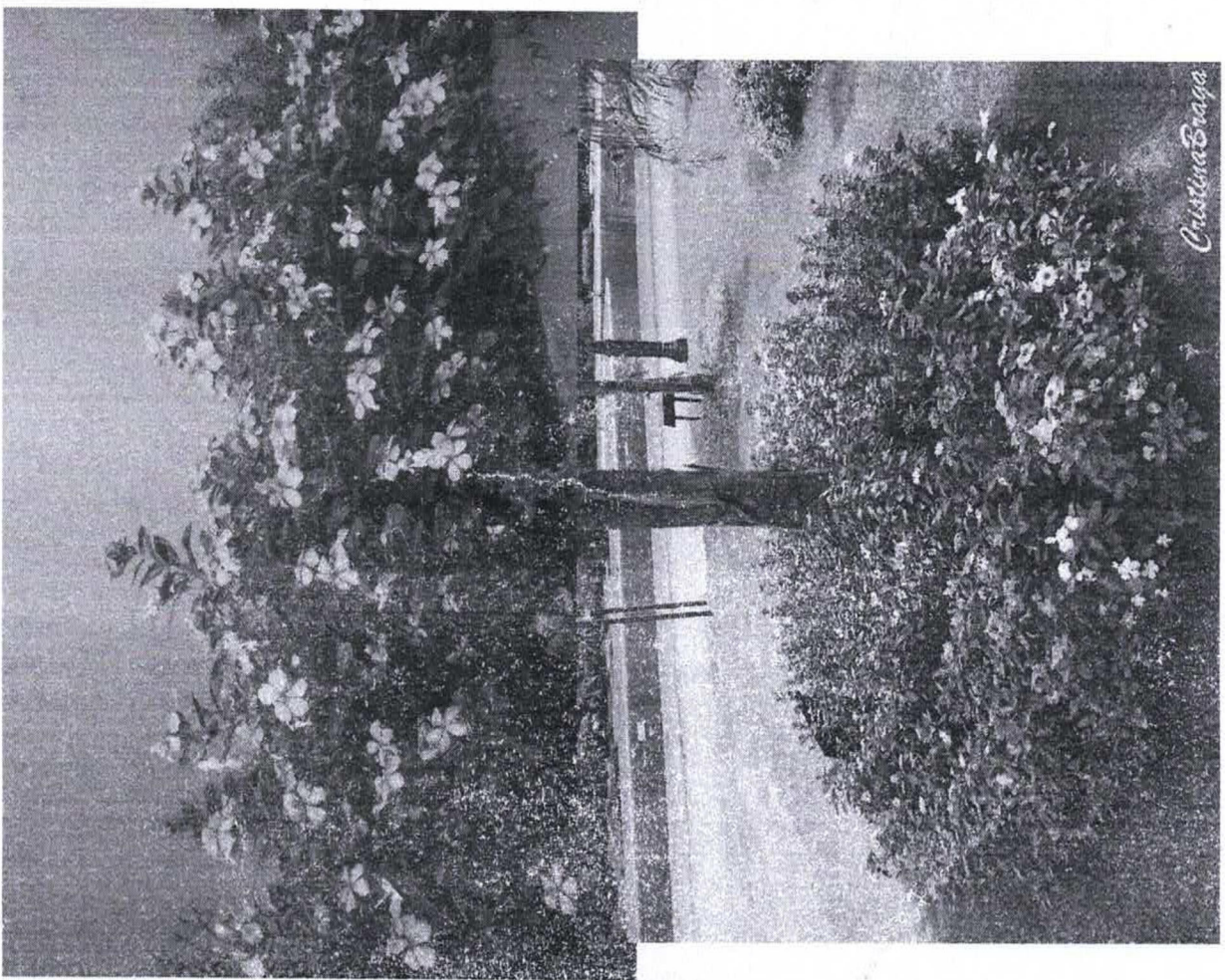
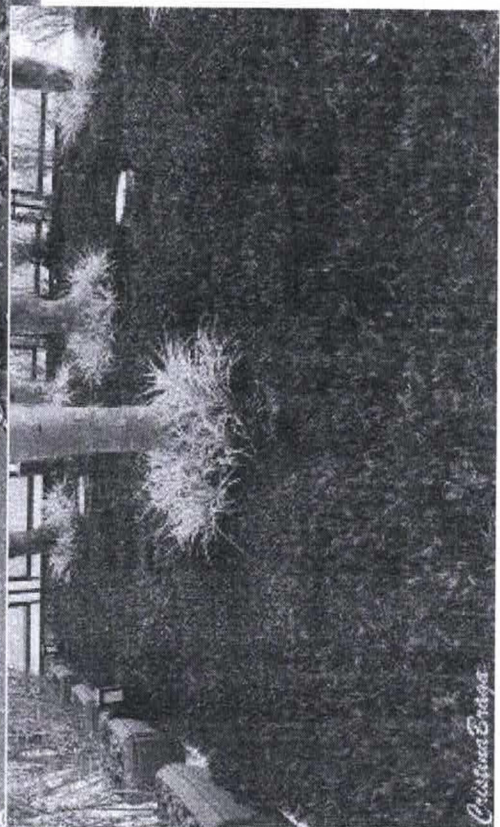
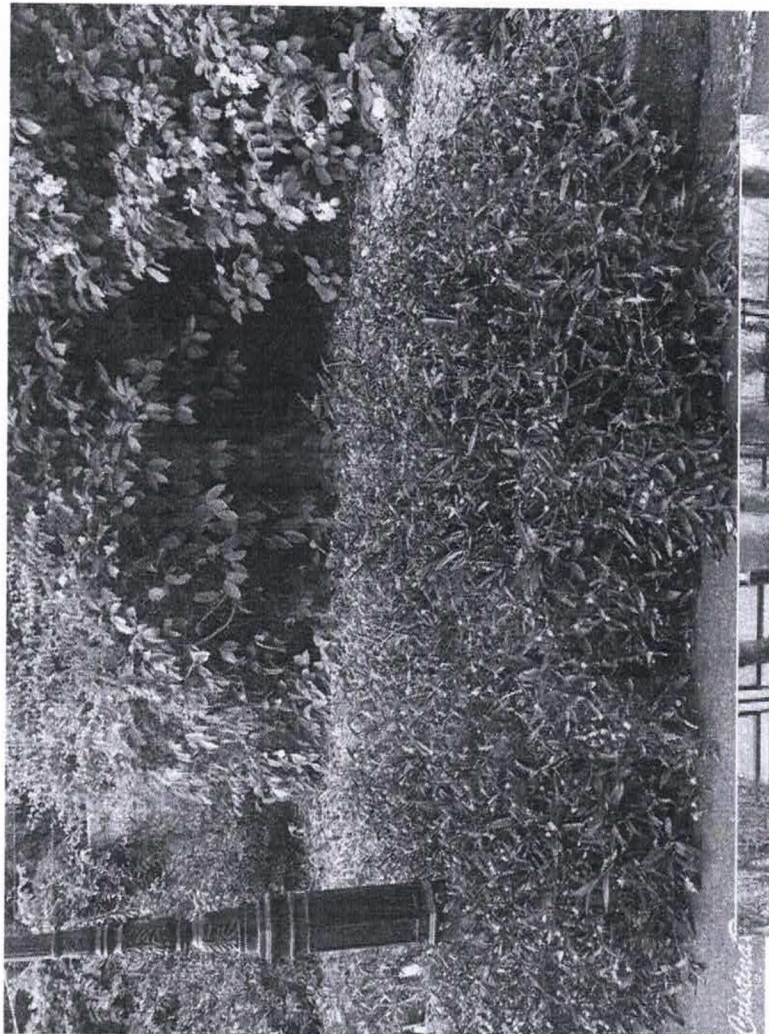
P.M. SÃO VALÉRIO-TO
FLS. N° 15
ASS. *elles*



Quantidades de mudas

- Ipê amarelo: 39
- Gramma esmeralda: 2.600 m²
- Trapoeraba roxa: 570
- Vinca: 200

P.M. SÃO VALÉRIO-TO
FLS. N° 17
ASS. *alles*



Elementos paisagísticos

- Quantidade de mini-praças: 7
- Quantidade de bancos: 14
- Área total de calçamento: 1.077 m²

